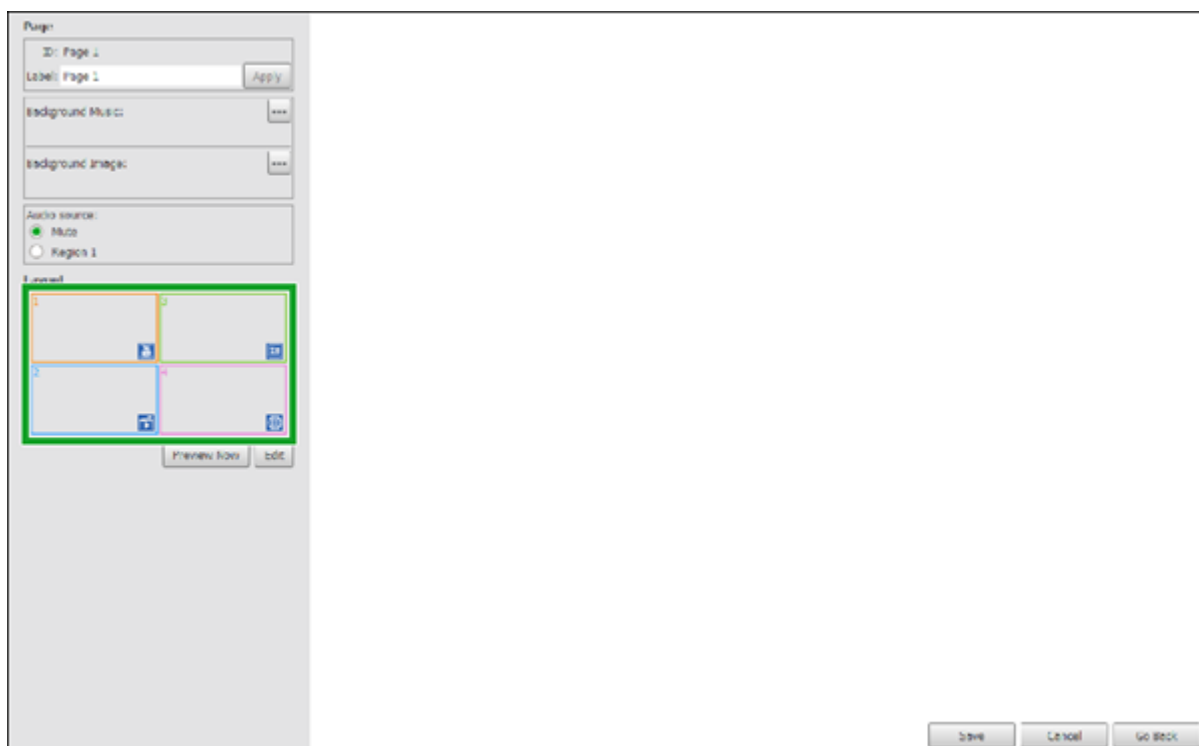


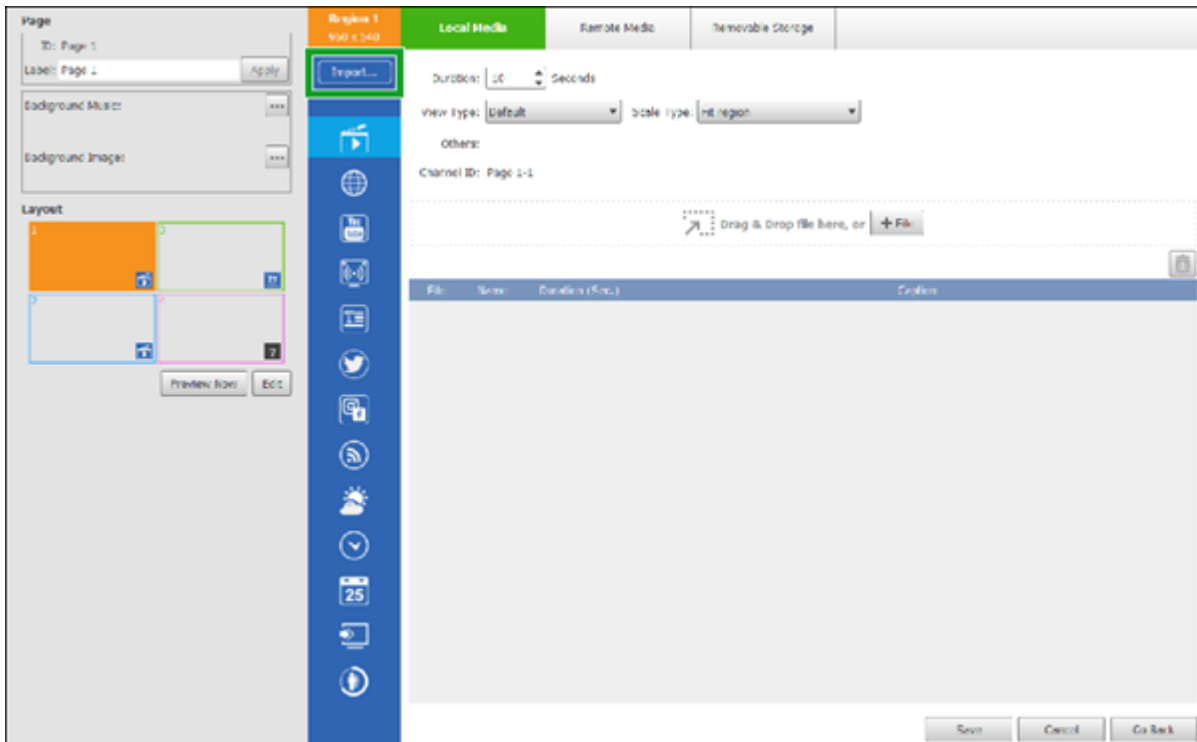
2.6.5.2 Importing Content (Grid Mode Only)

For layouts in Grid mode, you can import content (and their settings) for a layout item/box from another playlist page. To import content for a layout box follow the steps below:

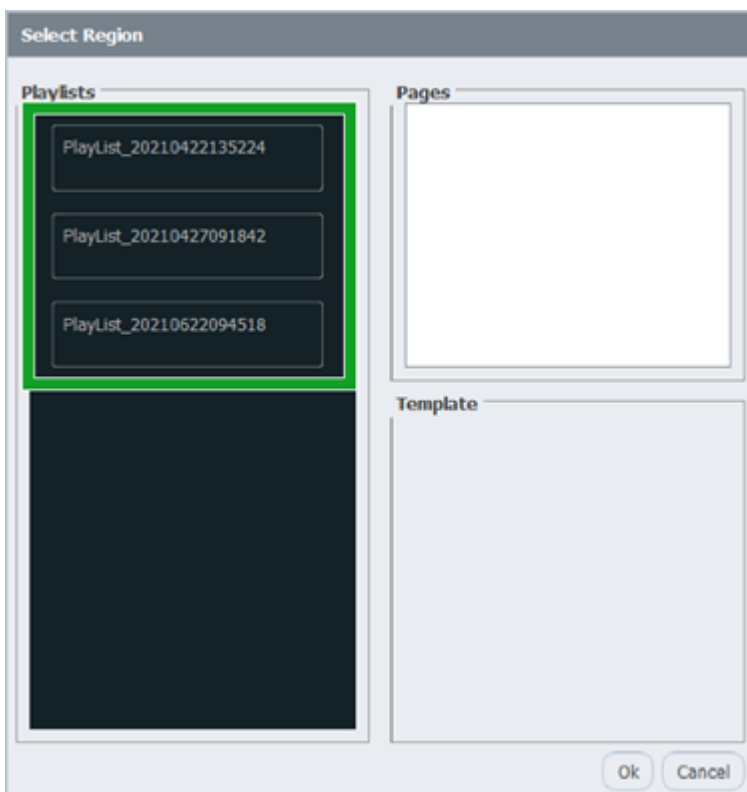
- In the **Layout** section of the editing panel, click on the layout box that you want to import the content to.



- In the content bar, click **Import...**

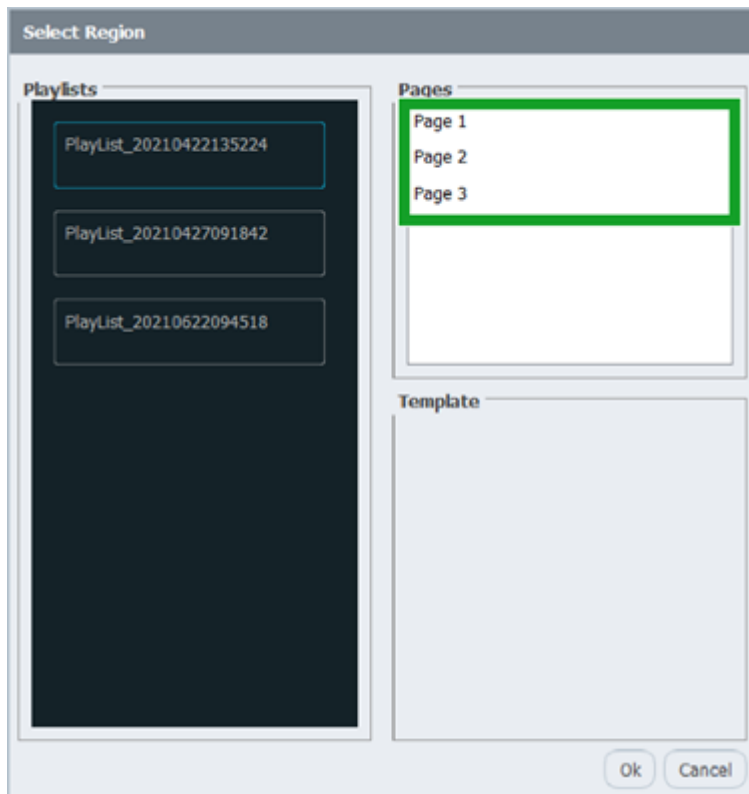


- In the **Playlists** menu of the **Select Region** pop-up window, click the playlist that features the content you want to import.

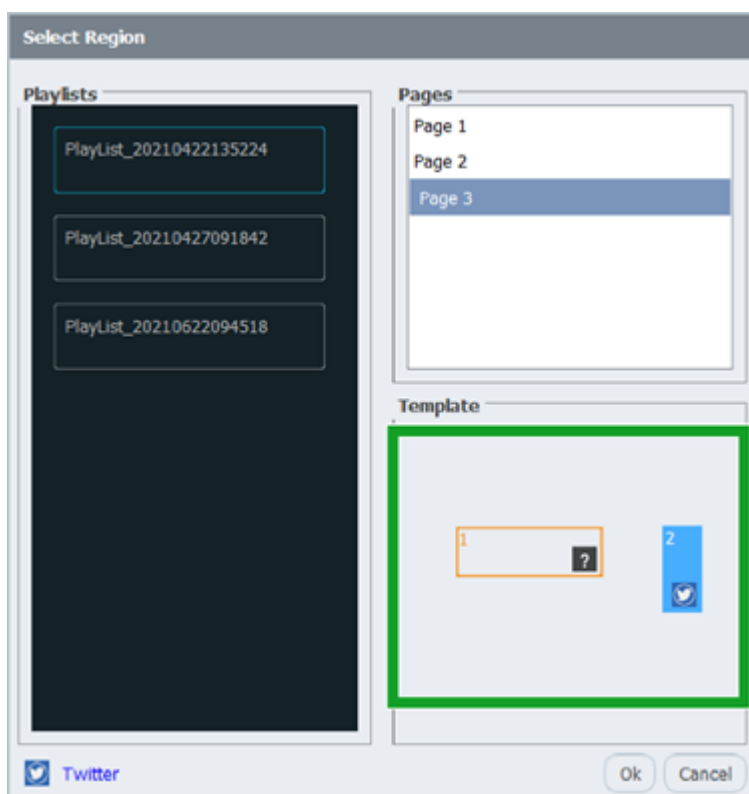


- In the **Pages** menu of the **Select Region** pop-up window, click the page that features the content you want to

import.



- In the **Template** section of the **Select Region** pop-up window, click the layout box that features the content you want to import.



- Click **Ok**.