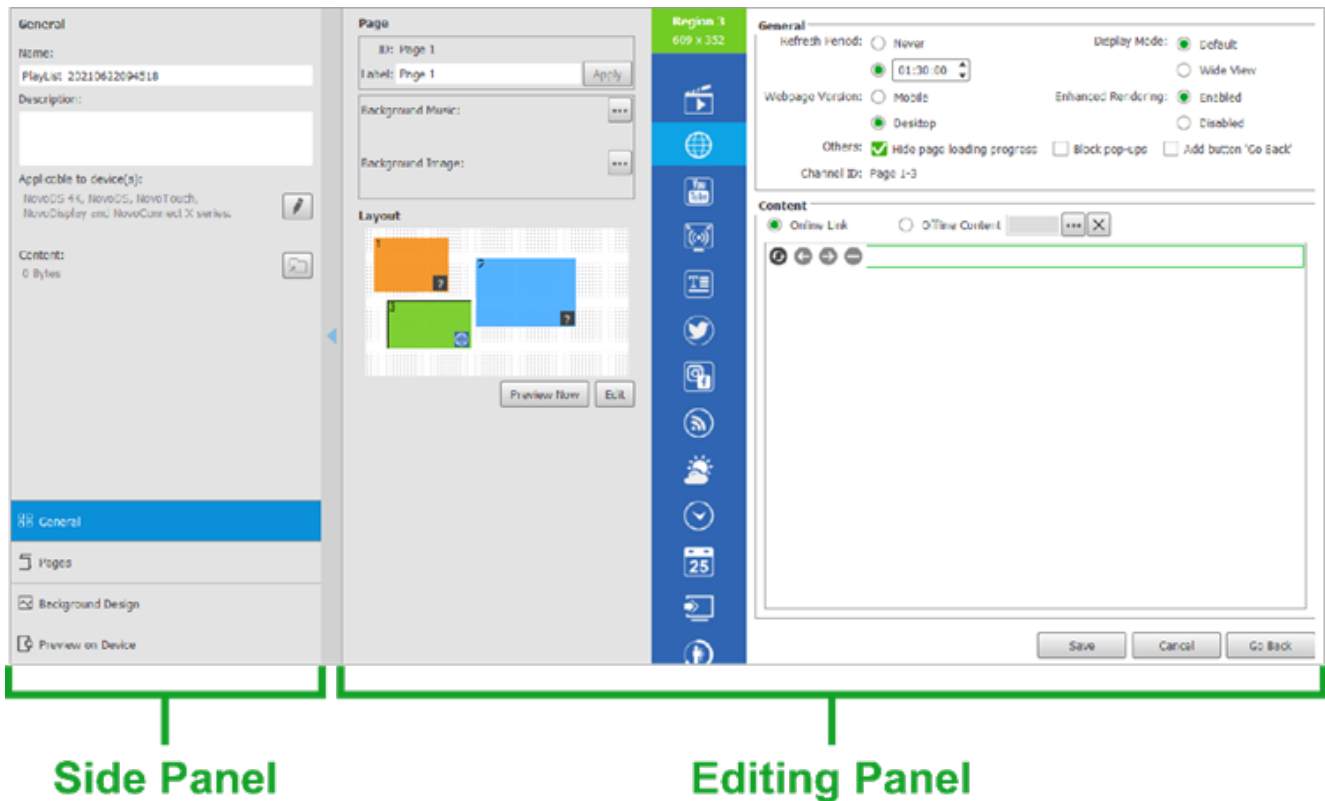


2.6 Playlist Editor

Once you have finished choosing or designing a layout for your playlist page, you will enter the editing menu. The editing menu features a side panel and a main editing panel:



The side panel allows you to access the following menus at the bottom of the panel to configure overall settings for the playlist:

- **General** – Configures general settings for the playlist including playlist name, description, Novo device, and content included. Go to *The General Panel* for more details on the **General** menu.
- **Pages** – Allows you to add and/or edit multiple pages within the playlist. Go to *The Pages Panel* for more details on the **Pages** menu.
- **Background Design** – Allows you to create a multimedia background for your entire playlist. Go to *The Background Design Panel* for more details on the **Background Design** menu.

- **Preview on Device** – Allows you to preview the playlist on a single device via the device's IP address. Go to *Preview On Device Panel* for more details on the **Preview on Device** menu.

The editing panel is the main interface for editing the content within a playlist page. Go to *The Editing Panel* for more details on the editing panel.