

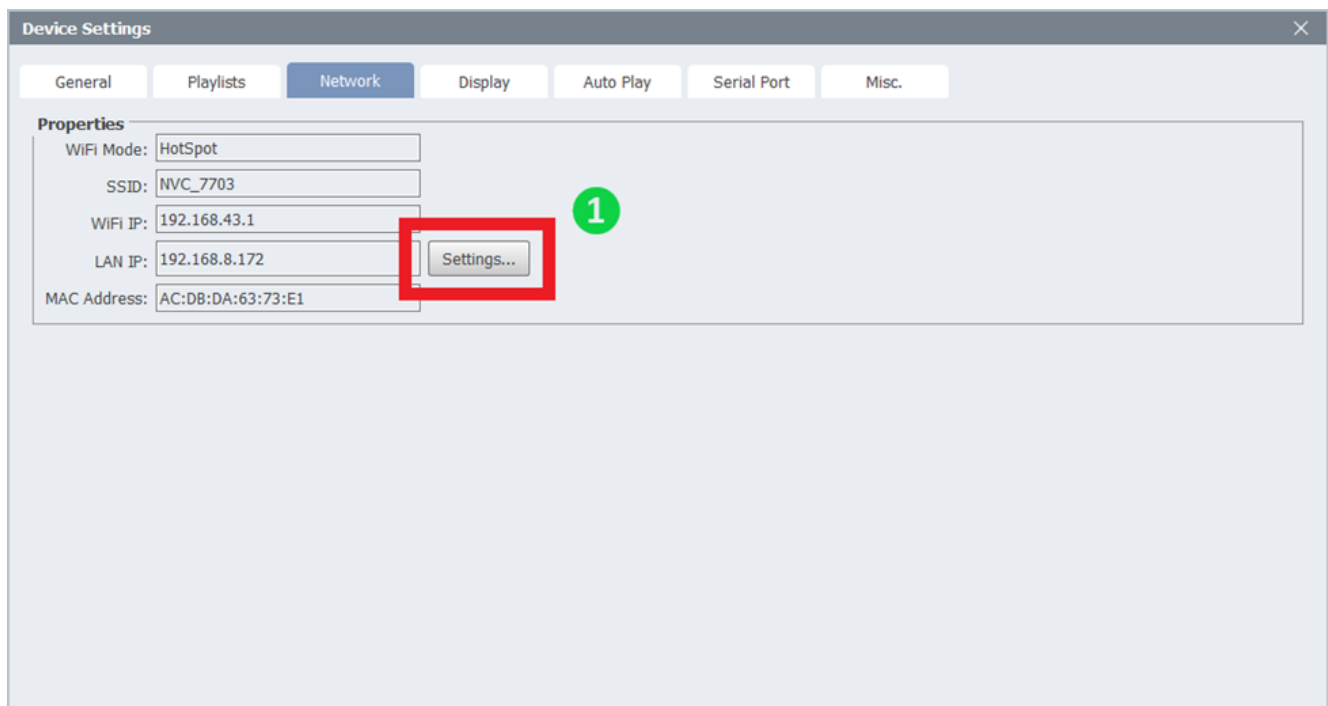
3.2 How to Configure Device Network Settings

NovoDS provides network setting as dynamic or static IP.

There are two way to configure device's network settings, one is configuring the setting from device, and the other way is creating a configure file.

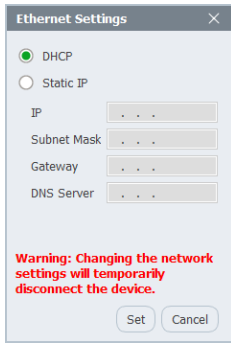
Configure Network setting from devices

- Go to **DS Devices**, click **Connect** on target device, then click **Device Settings**.
- Navigate to **Network**, click **Settings**.



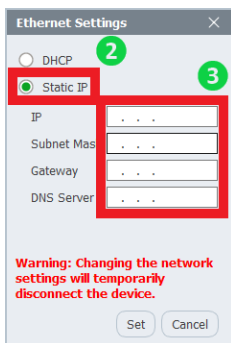
Device Setting

- Default setting is **DHCP**.



Ethernet Setting

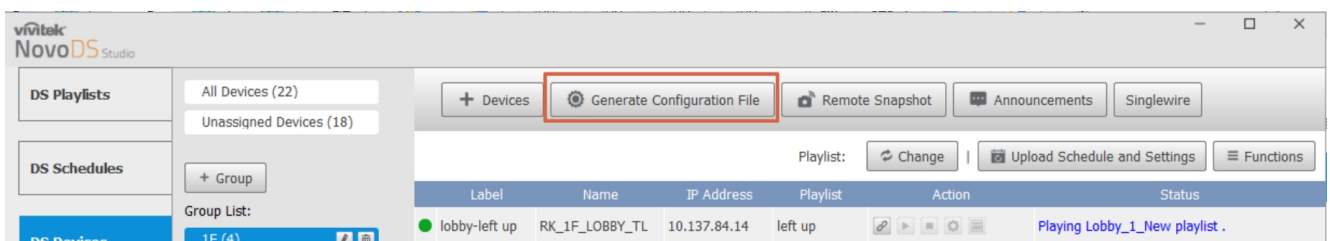
- Select **Static IP**, and fill in the **IP address**, **Subnet mask**, **Gateway** and **Domain name server** according to actual needs.
- Click **Set** and exit, device will retrieve the new IP address in a few seconds.



Ethernet Settings

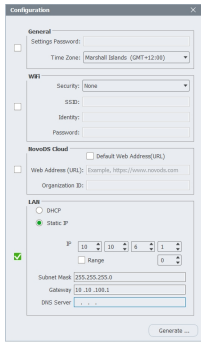
Create a configure file

- Go to **DS Devices**, click **Generate Configuration File**.



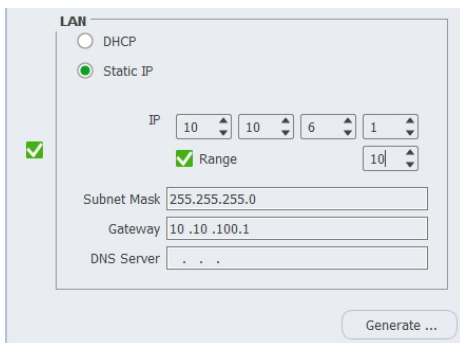
Generate Configuration File

- Navigate to **LAN**, then Select **Static IP**.



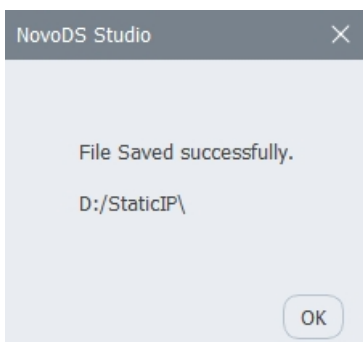
Configuration

- Fill in the **IP address**, **Subnet mask**, **Gateway**, and **DNS Server** according to actual needs.
- The function is able to generate a **single** IP configuration file or a required **range** of files.
- To generate more than one configuration file, check the **Range** box and enter the required numbers.



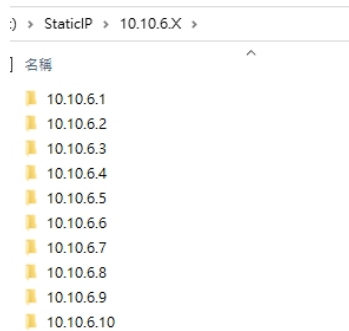
Generate More Than One File

- Click **Generate** to create the file(s), then select the destination folder to save the configuration file.
- A **message** will pop up on the screen confirming the successful generation.



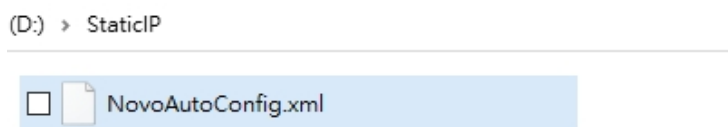
Confirming message

- All configuration files will be saved in separate folders under your selected folder and will be named after their corresponding IP addresses.



Saved folder

- Enter the folder and copy the generated file **NovoAutoConfig.xml** to the root directory of a microSD card or a USB disk.



NovoAutoConfig file

- Insert the microSD card or USB drive into a DS device's corresponding port.
- The device will automatically read the configuration file and apply its network settings accordingly.
- Once the setting is applied, a **confirming message** will be displayed on the home screen.



