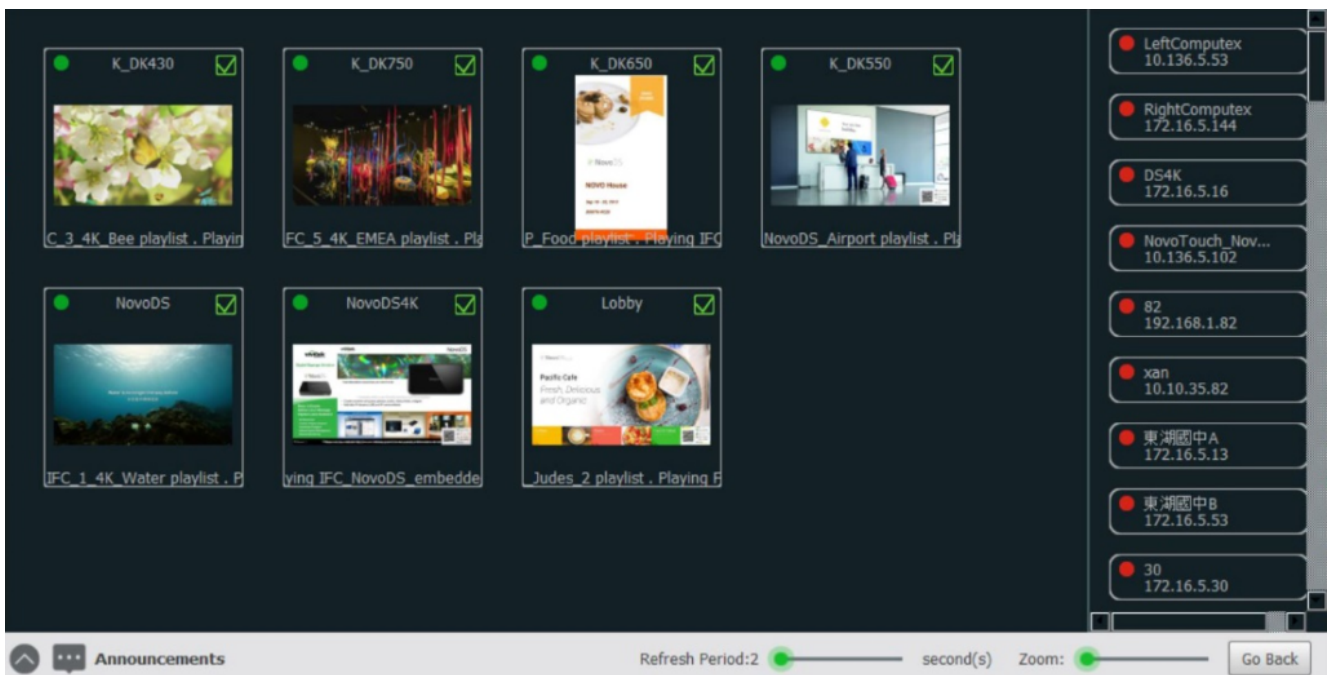


# 4.5 Remote Snapshot

To view a real-time screenshot of what the devices are currently displaying, click the **Remote Snapshot** button.



The main window will show the screenshots of every device in your device list, like the following.



There are a few parameters you can adjust to suite your needs.

- Uncheck the box at the top-right corner for a device to remove its snapshot
- Click **Announcements** to overlay an announcement onto each device's screen. Go to *Creating an Announcement* for more information on creating announcements.
- Use the **Refresh Period** slider at the bottom of the screen to set the amount of time between each refresh of

the snapshots.

- Use the **Zoom** slider at the bottom of the screen to toggle the zoom level of the snapshots.