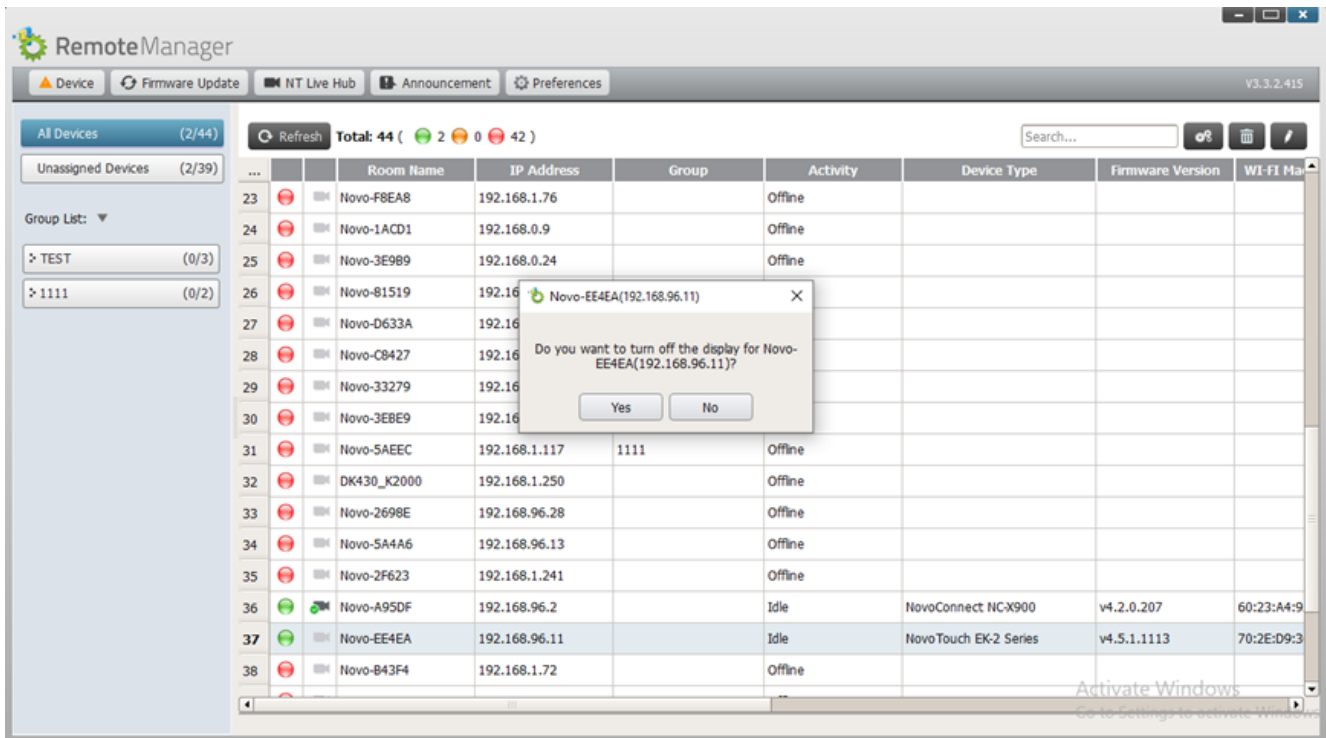


6. Remote Power On/Off (RDM)

Remote Power On/Off

1. Launch RDM.
2. Use a mouse to navigate to the display you want to control, and then double click the green status indicator.



3. A confirmation window will pop up.
4. After selecting **Yes**, the status indicator for the display you want to power off will turn orange.

37	🟡	Novo-EE4EA	192.168.96.11		Idle	NovoTouch EK-2 Series	v4.5.1.1113	70:2E:D9:3
----	---	------------	---------------	--	------	-----------------------	-------------	------------

5. If you want to wake a display, double click the orange status indicator.

37	🟢	Novo-EE4EA	192.168.96.11		Idle	NovoTouch EK-2 Series	v4.5.1.1113	70:2E:D9:3
----	---	------------	---------------	--	------	-----------------------	-------------	------------

6. The display will wake up.



