

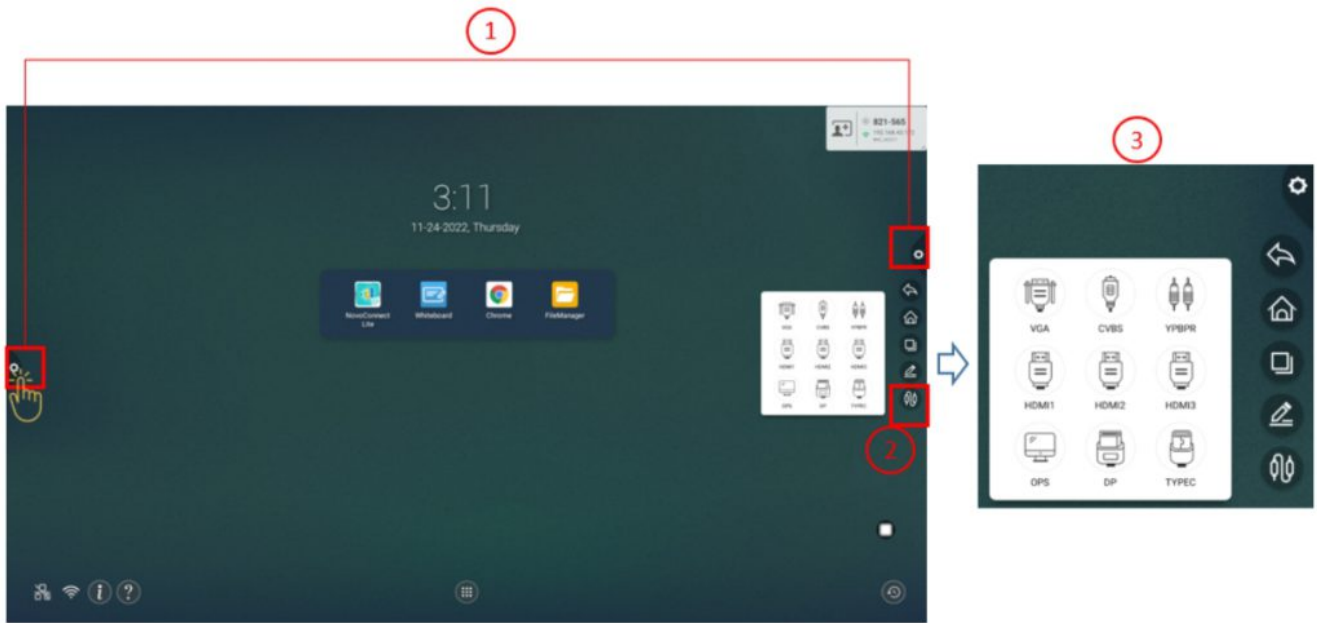
## 2.6 Switch input source

After making a video input connection, open the input source menu to select which input source to show on the display. To open the input source menu, choose one of the following methods:

- Press the **Input** button on the remote control.



- Tap the tool bar on the either side of the home screen, and then tap the input source button in the tool bar.



Once the input source menu is open select the video input you want to show on the display.