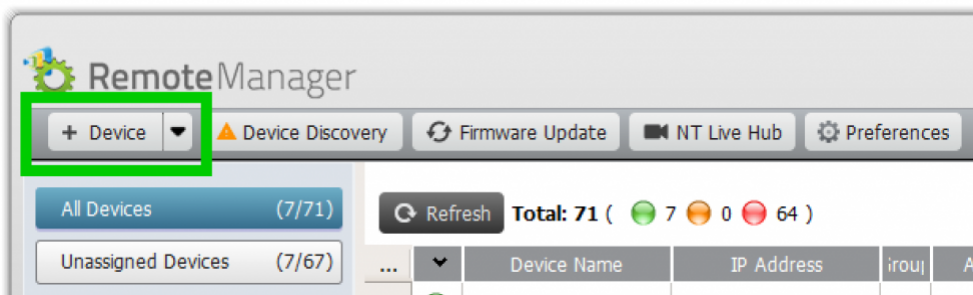



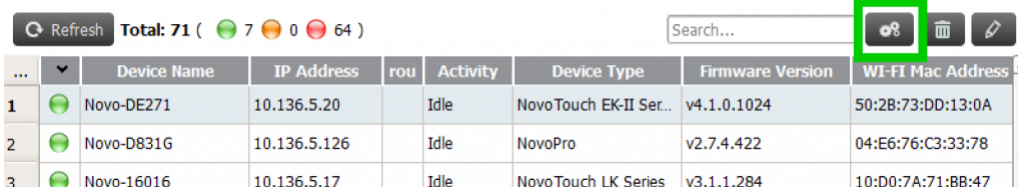
2.7 Use Remote Manager for installation

Launch **Remote Manager** software under the same local network with Novo device.

Go to the left top corner, click **+Device** > Input the Novo device's IP address to add the device into Remote Manager table.

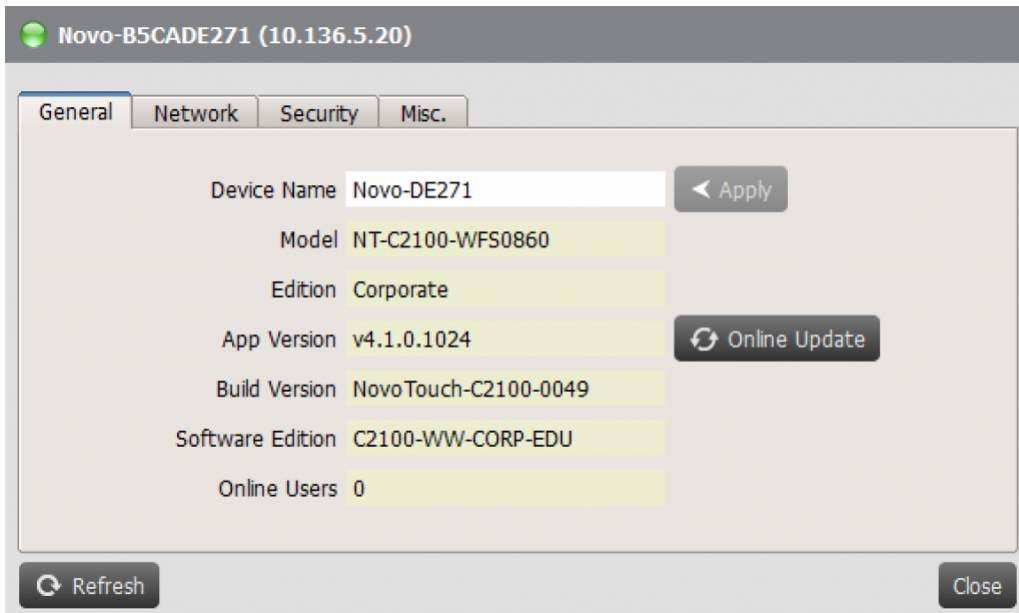


Once on the device list, click the device you want to configure, then click  to go to setup.



...	Device Name	IP Address	rou	Activity	Device Type	Firmware Version	WI-FI Mac Address
1	Novo-DE271	10.136.5.20		Idle	NovoTouch EK-II Ser...	v4.1.0.1024	50:2B:73:DD:13:0A
2	Novo-D831G	10.136.5.126		Idle	NovoPro	v2.7.4.422	04:E6:76:C3:33:78
3	Novo-16016	10.136.5.17		Idle	NovoTouch LK Series	v3.1.1.284	10:D0:7A:71:BB:47

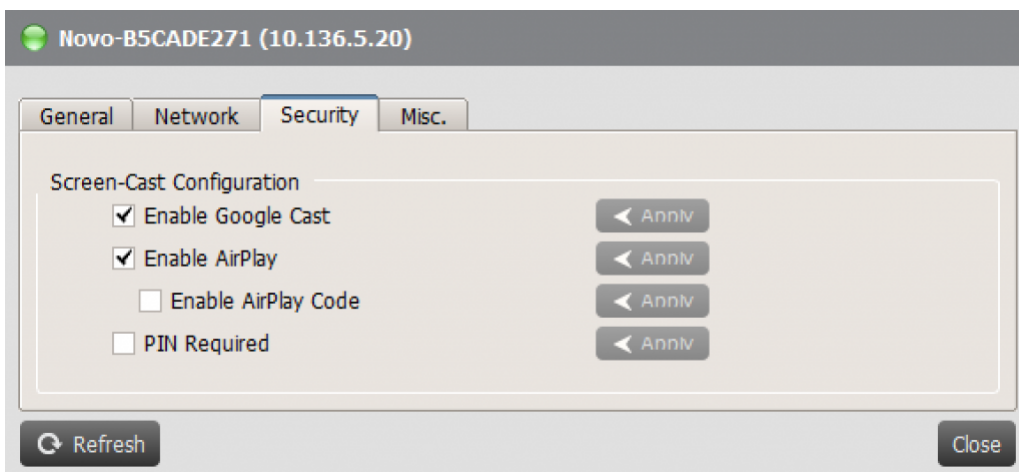
IT can control the devices remotely, such as setup device name, remote upgrade, change system language and time zone, download log file remote for troubleshooting and so on for individual Novo device.



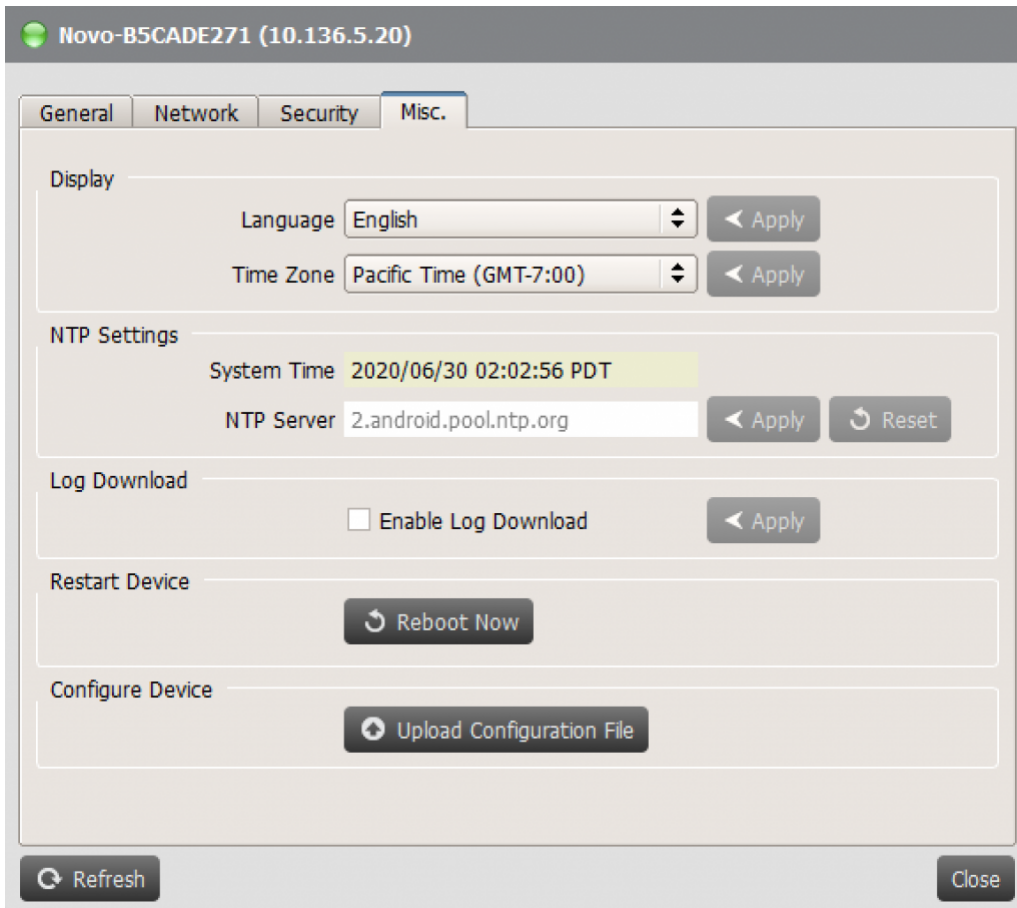
General settings



Network settings



Security settings



Settings for System Language, Time Zone, NTP Server, Log File Download, Remote Reboot, Upload Config File.