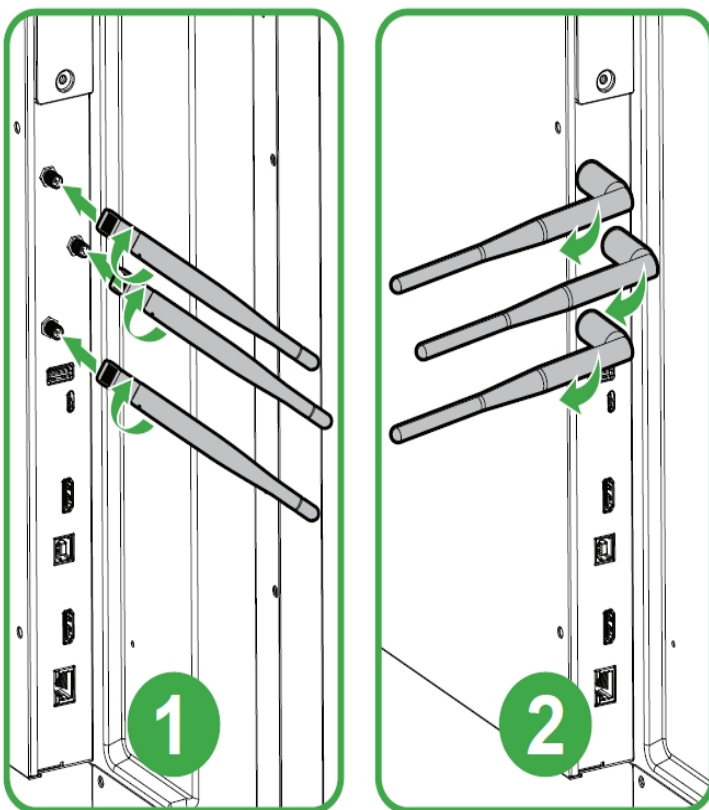


2.2 Get Started

Installing the Wi-Fi Module

In order for the display to have access to a wireless network or Internet, you must first install the Wi-Fi antenna to the product.

Insert the Wi-Fi antennas onto the connectors, rotate them clockwise, and then turn the antennas inwards.



Powering the Display

After mounting/installing the NovoTouch in the desired location you must supply power to the display using the following steps:

1. Plug the supplied power cable into the display and a power source.
2. Turn the power switch located at the right side of the

display on.

3. Press the power button on the display or the remote control to power on the display.

NOTE: Only use the power cable provided in the packaging with the display.

