
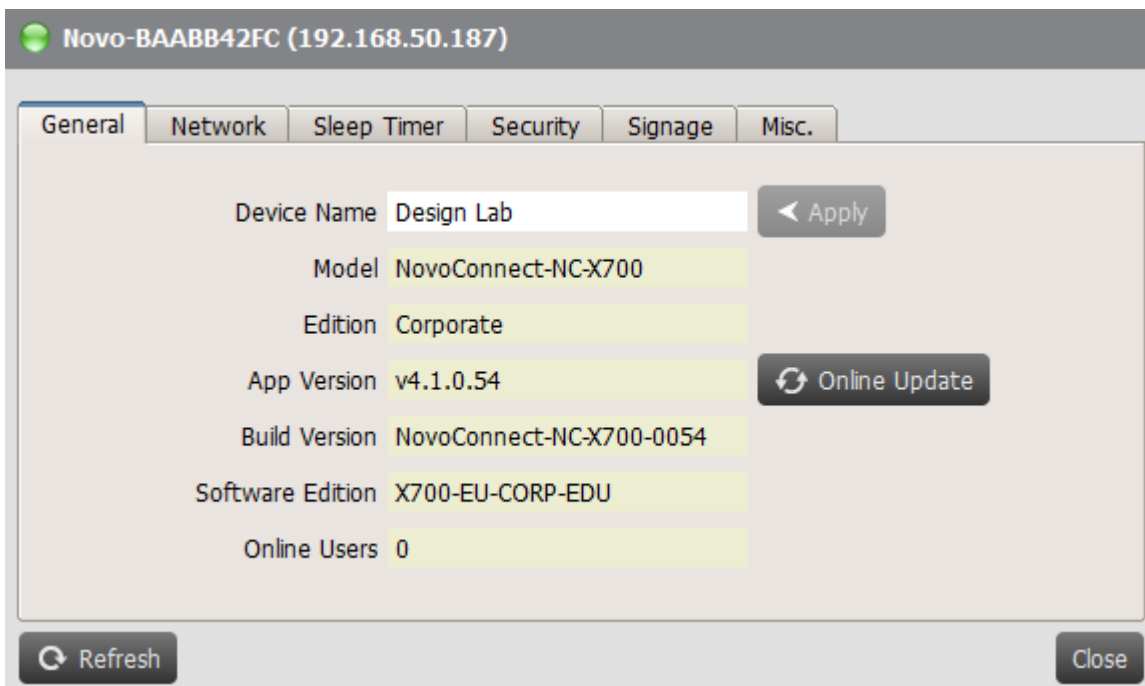


5. CONFIGURE DEVICE SETTINGS

By selecting a device and clicking the device settings button  you will be taken to the device settings management screen. From there you will be able to remotely view and/or configure the settings for each NovoPRO device on your network.

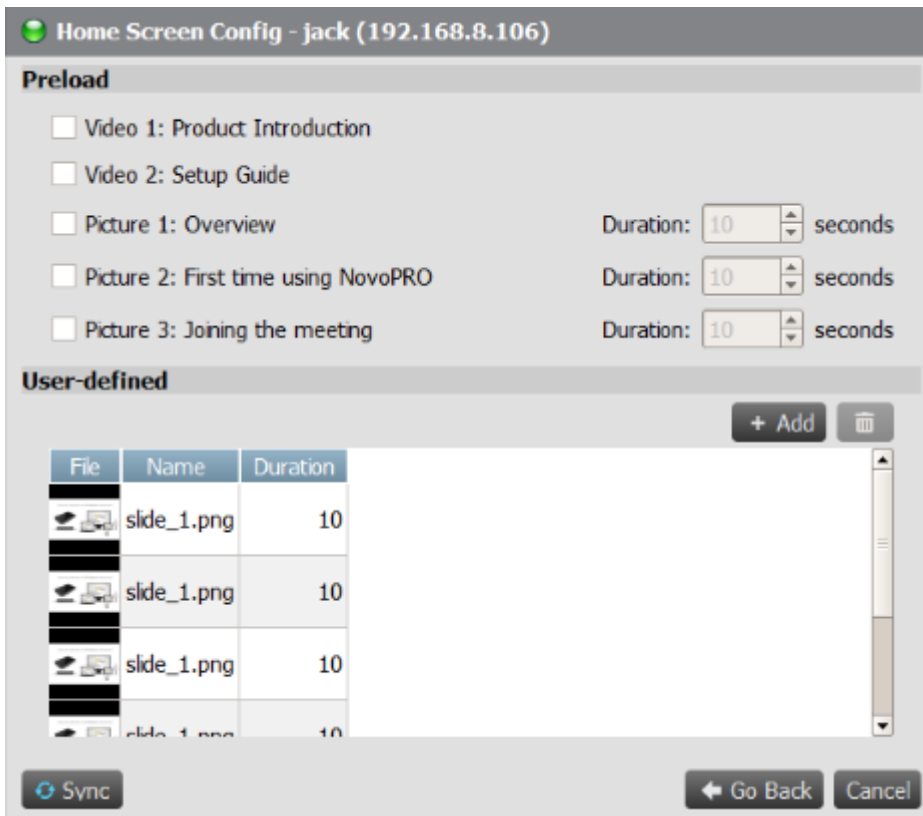


Customize Home-screen Background

Some NovoConnect devices allows users to customize its background pictures of the home-screen. To do so for NovoPro, click tab "Misc."

1. Then a configuration dialog pops up, with two sections, "Preload" and "User-defined."
 - a. Section "Preload": the built-in content. It has two video clips and 3 pictures. You can enable/disable their playback as well as adjust their playback duration.
 - b. Section "User-defined": the customization content. Users can edit the "playlist" for this slideshow

area. The “playlist” consists of any numbers of pictures and videos.



1. Click on button “Sync” to commit the changes to the NovoPRO device (including uploading the content.)

<

Back