

# 4.1 NT Settings

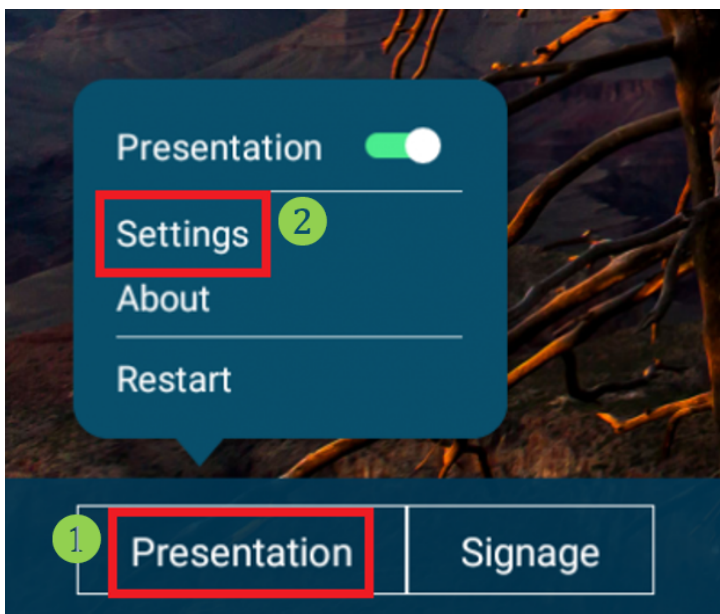
NT Settings contains **Network**, **Display**, **Software Upgrade** and **Device Settings**.

The article will explain the main functions of NT Settings and guides you how is it working.

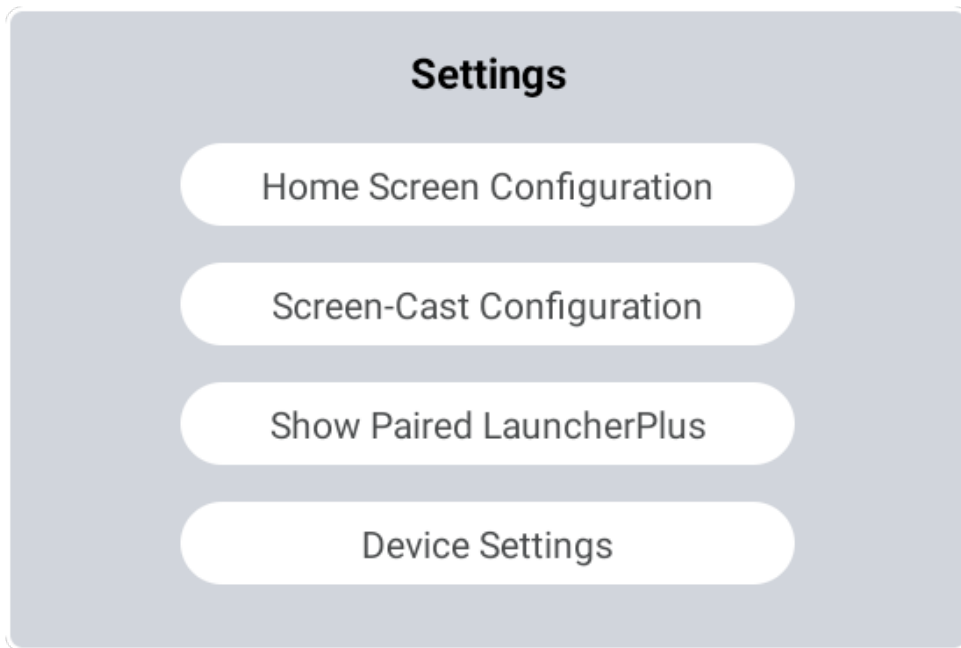
## How to enter the NT Settings

*\*User will need to connect a Wired/ Wireless Mouse to NovoConnect X700/ X900 for the following operation.*

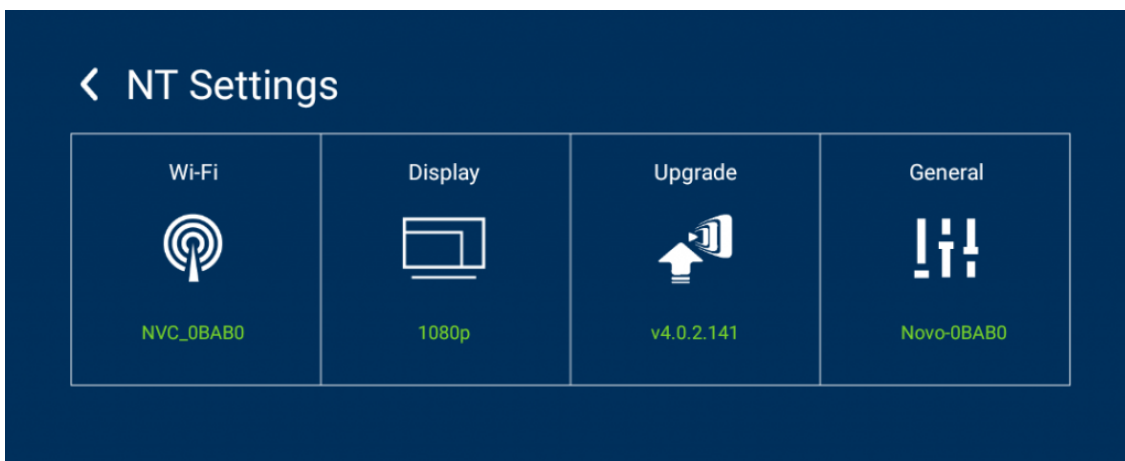
- Click **“Presentation”** at the bottom-left of the screen
- Then click **“Settings”**



- Click **“Device Settings”** to enter NT Settings

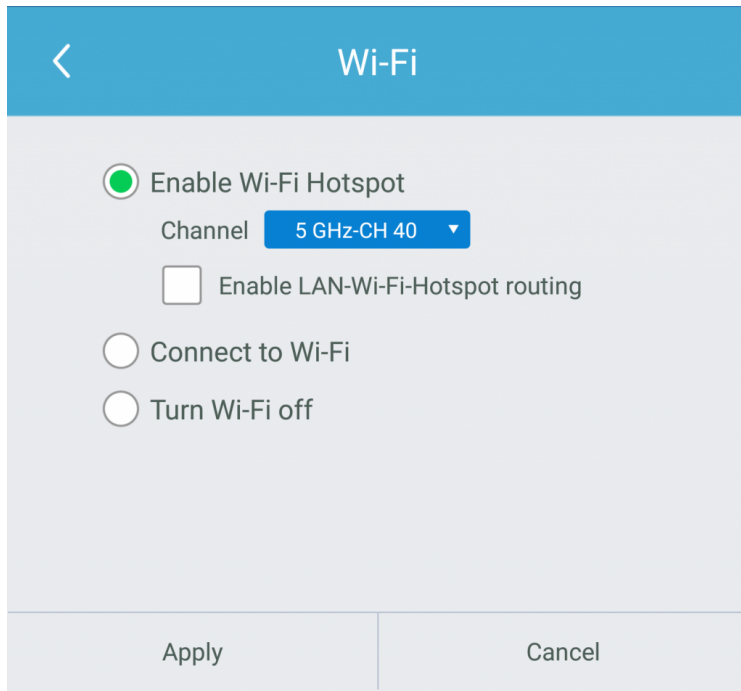


## NT Settings Menu



## Wi-Fi Settings

**Wi-Fi Hotspot** mode is factory default setting, you can change it to **Connect to Wi-Fi** (AP-Client), or **Turn Wi-Fi off** (Radio off).

The image shows a mobile application interface for Wi-Fi settings. At the top, there is a blue header bar with a white back arrow on the left and the text "Wi-Fi" in the center. Below the header, the main content area has a light gray background. It features three radio button options: "Enable Wi-Fi Hotspot" (which is selected with a green dot), "Connect to Wi-Fi", and "Turn Wi-Fi off". Under the "Enable Wi-Fi Hotspot" option, there is a "Channel" label followed by a blue dropdown menu showing "5 GHz-CH 40". Below the dropdown, there is an unchecked checkbox labeled "Enable LAN-Wi-Fi-Hotspot routing". At the bottom of the interface, there are two buttons: "Apply" on the left and "Cancel" on the right, separated by a vertical line.

< Wi-Fi

☒ Enable Wi-Fi Hotspot  
Channel 5 GHz-CH 40 ▾

☐ Enable LAN-Wi-Fi-Hotspot routing

☐ Connect to Wi-Fi

☐ Turn Wi-Fi off

Apply Cancel

Wi-Fi Hotspot mode also provide **“LAN-Wi-Fi-Hotspot routing”**, It means, when this option is enabled, both the two network will be the same routing, if NovoConnect X700/ X900 connects both Wireless and Wired network.

### **Wi-Fi Frequency and Channel**

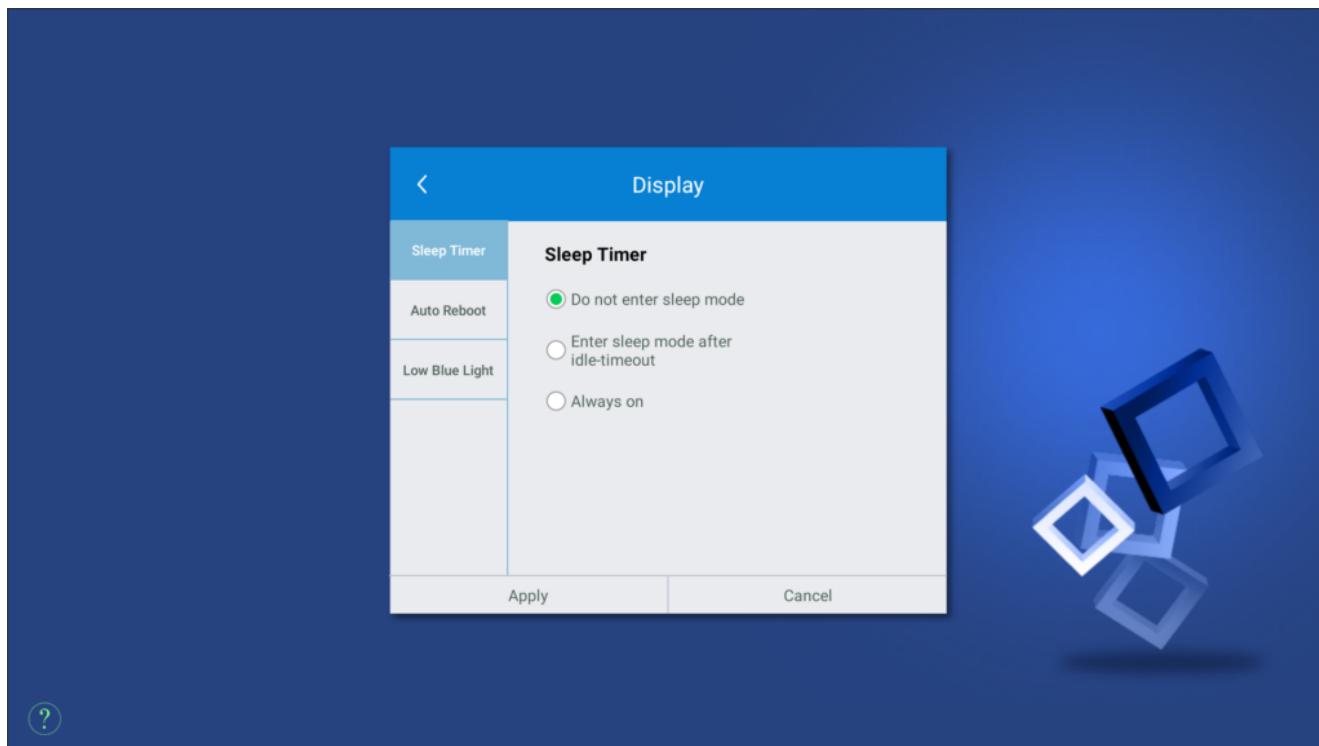
Wi-Fi HotSpot mode provide **2.4GHz** and **5GHz**, they have **11 channels** and **9 channels** respectively. **5GHz** and **Channel 40** is factory default setting, you can change the frequency and channel anytime.

Select Channel	
2.4 Ghz	5 Ghz
CH 1	CH 36
CH 2	CH 40
CH 3	CH 44
CH 4	CH 48
CH 5	CH 149
CH 6	CH 153
CH 7	CH 157
CH 8	CH 161
CH 9	CH 165
CH 10	
CH 11	

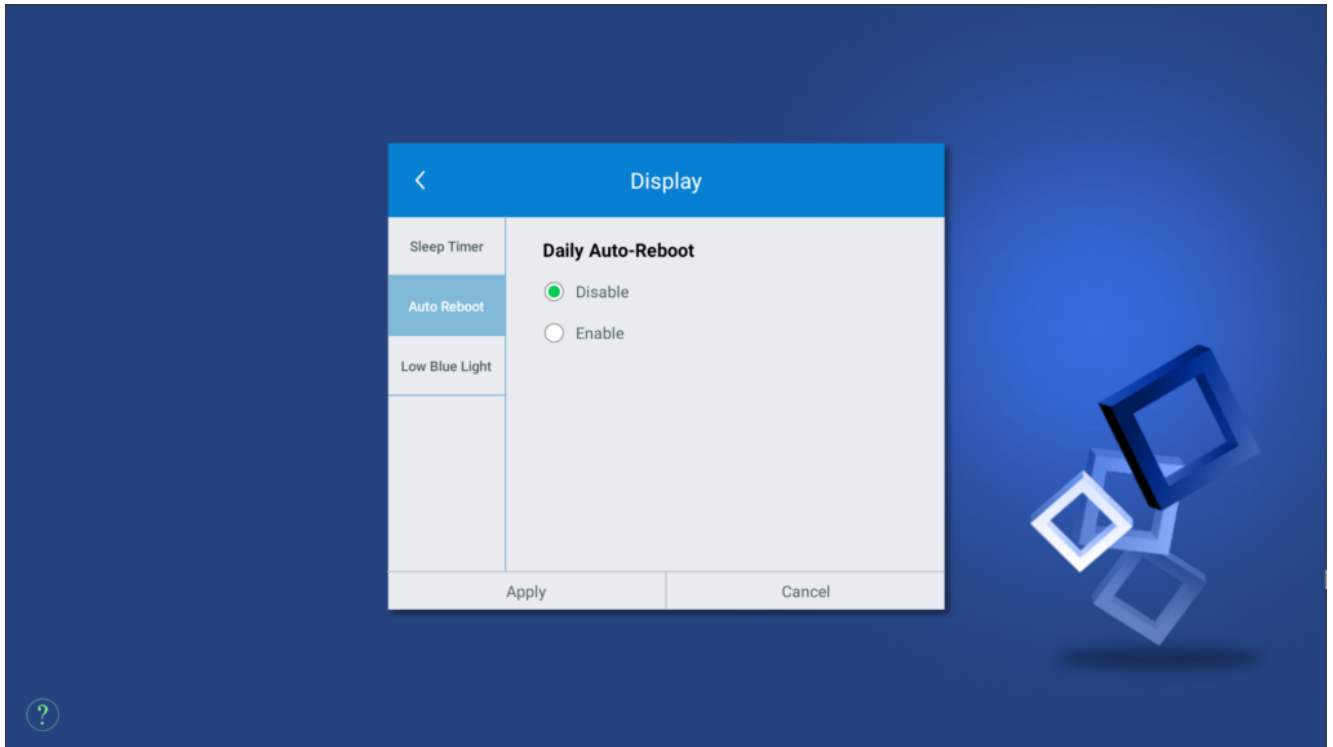
## Display

NovoDisplay supports the following functions:

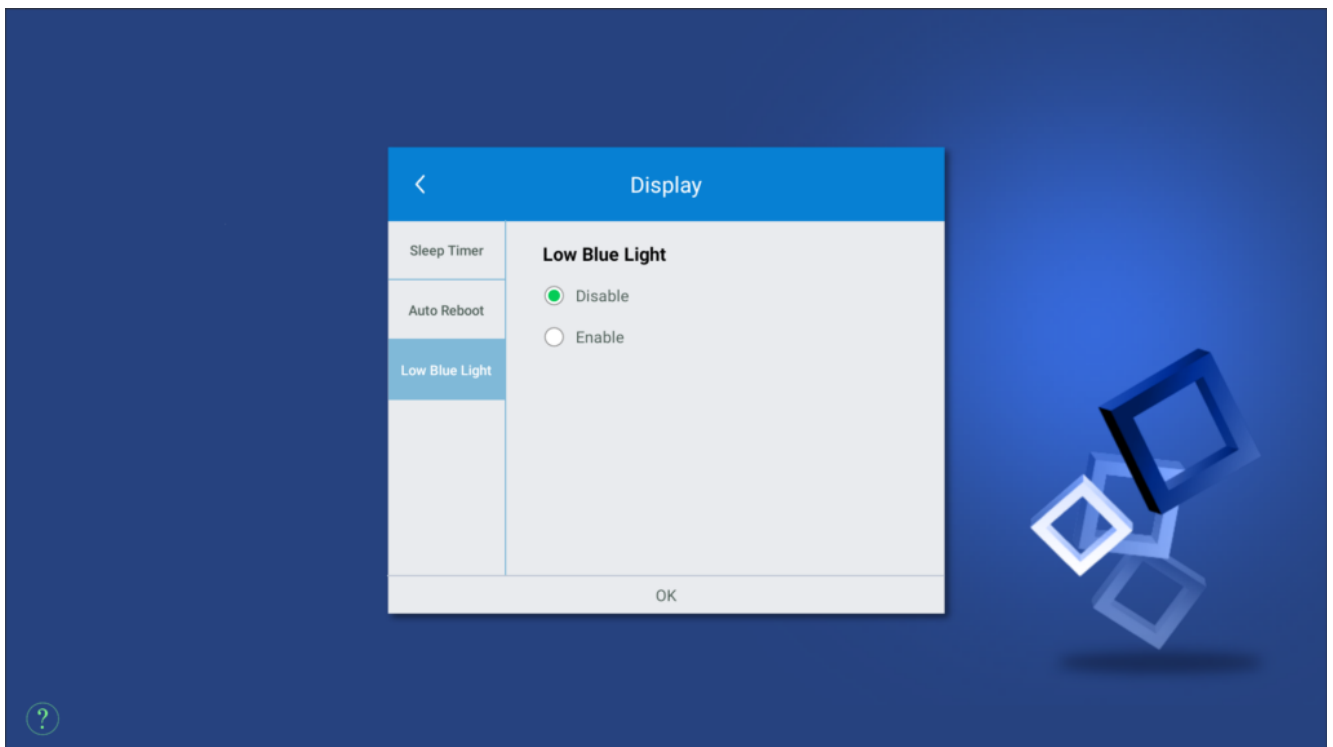
### Sleep Timer



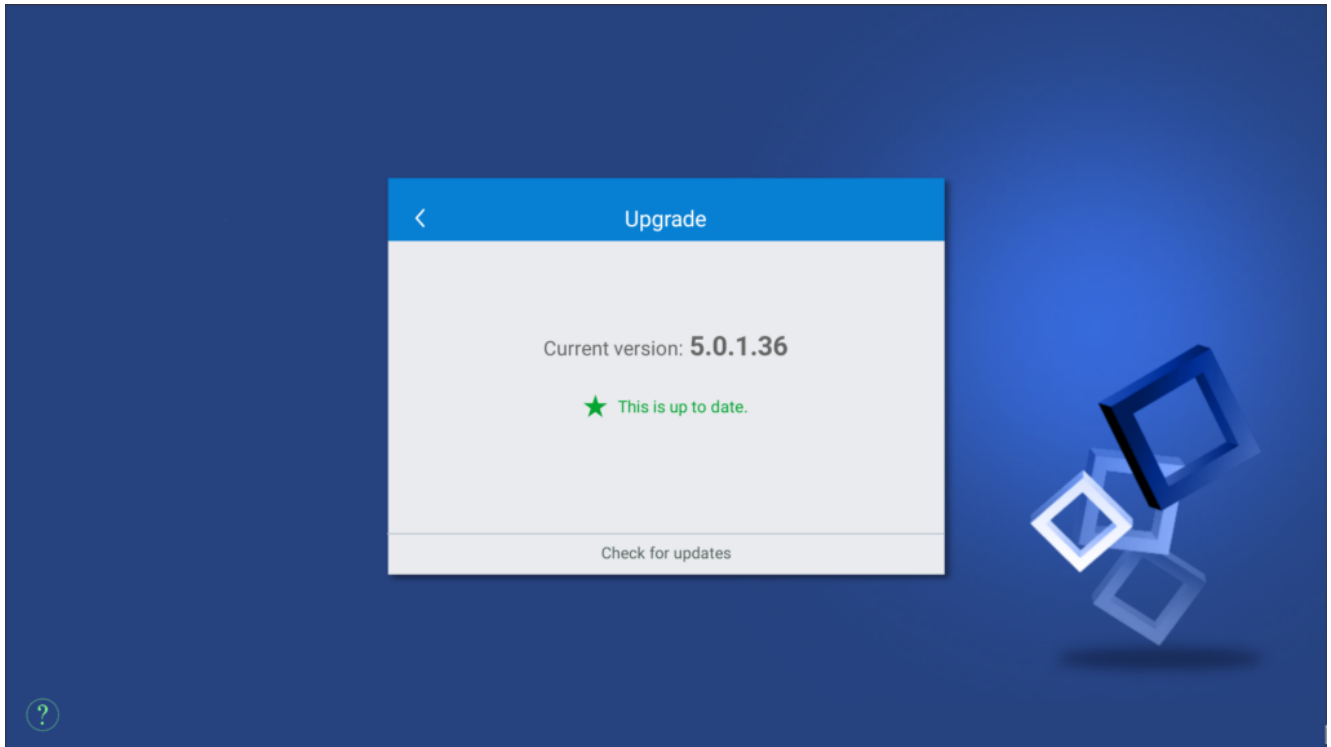
### Auto Reboot



Low Blue Light

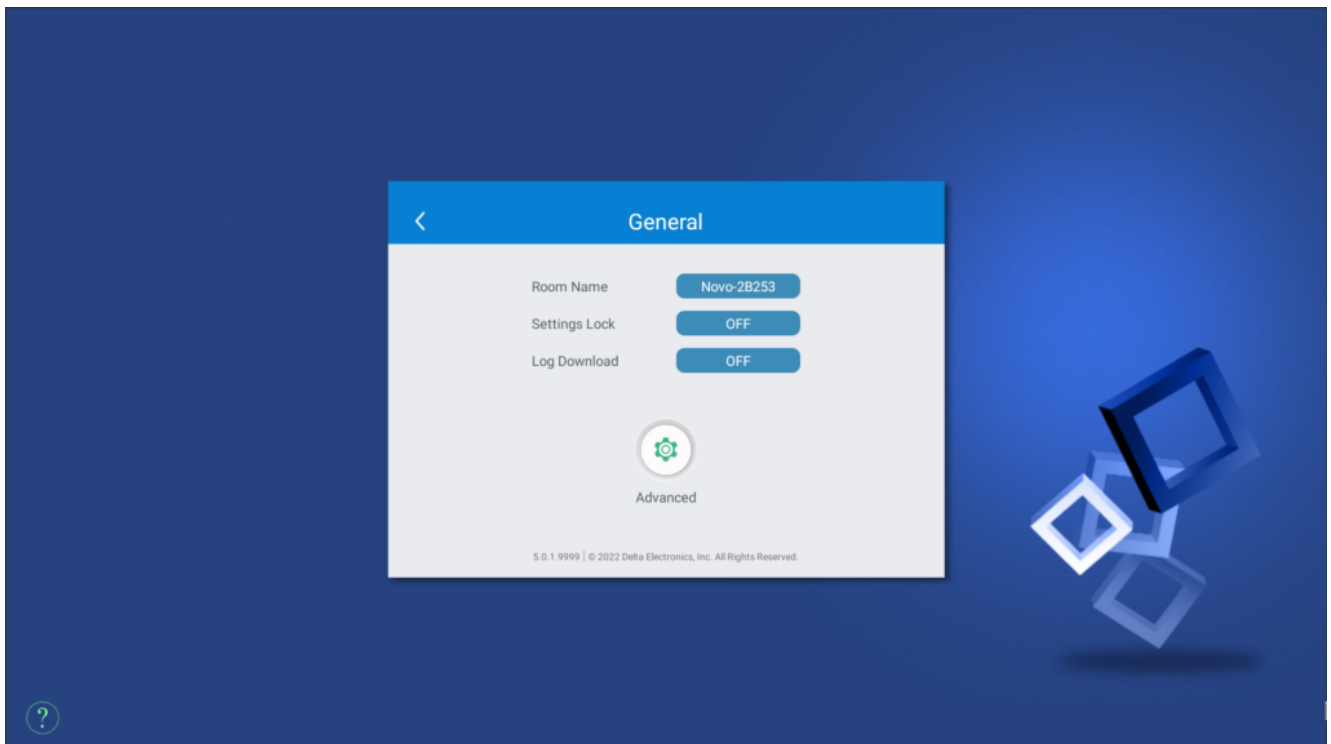


Upgrade



User can check the current software version here. And also if the updates available, user can perform online upgrade by tapping “**Check for updates**”. (Internet connection is needed for the process)

## General Settings



Here user can also perform the following settings:

- **Change the Device Name**

User can change the device name for easily identifying the device or the location where the device is. This changing will also be displayed on the Home Screen of NovoConnect X700/X900.

- **Enable or disable Setting Lock**

Use for connecting other apps or devices to NovoConnect X700/X900.

- **Enable or disable Log Download**

Allows the log file to be downloaded for debugging.

- **Advanced (Android Device Settings)**

To change **Date, Time, Time Zone, Input Method, Language, Google Account**. Or advanced settings for system management or maintenance, e.g. **Apps management, System Security, Networking Credentials**, etc.

