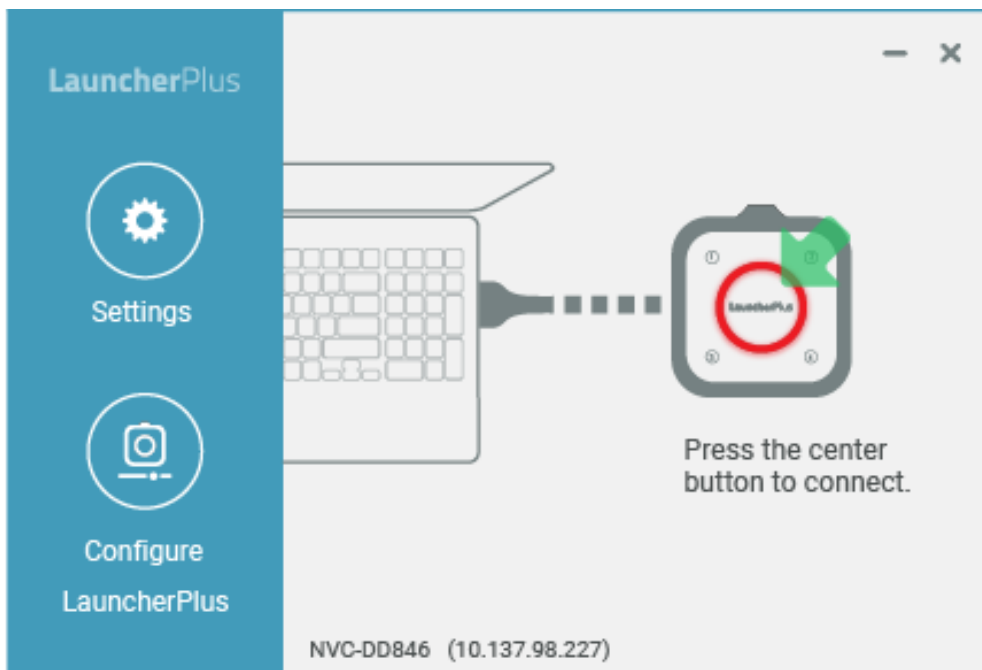


Joining a Meeting using a Launcher unit

Launcher dongles allows you to wirelessly connect to a big screen from your Windows/Mac computers. Up to four users can share screens simultaneously. Innovative annotation tools make it easy for everyone to join in the conversation

- Snapshot 1
- Snapshot 2
- Snapshot 3
- Snapshot 4



LauncherPlus



Disconnect



Projection Mode
Presentation



172.16.5.52



PIN:6892



LauncherPlus

Settings

Configure LauncherPlus

Projection Mode

Login Name

Notifications

Software Upgrade

(Delta-Office) 10.137.98.227

Press the center button to connect.

Projection Mode

- Video Playback
- Presentation

Visual Quality: High

Screen Refresg Rate: High

LauncherPlus Lite

Video Clip

<https://www.youtube.com/watch?u=Ugh5luL TMel>


0:00 / 0:00

Make sure your Launcher dongle is paired to the desired Novo device. Then

1. Plug your Launcher dongle into your computer via a USB port.
2. If the Launcher software is not started automatically, double-click program "Launch Novo" found on the Launcher dongle.
3. When the center button is flashing red, press it to connect.
4. After joining,

Start presenting

Pause presenting

Other than projecting your screen to the big screen, you can enhance your meeting by sharing up to 4 screens simultaneously, or using the big screen as an extended screen. More sharing tools are available in ,

including Screen Extension, Video Clip etc. Alternatively, you can upgrade the Launcher software to the full-feature NovoConnect Software.

Screen Mirroring



Screen mirroring from Windows/Mac computers
Video & Youtube



Sharing local video clips or web videos without any compromise in video quality

Voting/Polling



Preparing your voting/polling ahead of time and see your voting/polling session in real-time

High Security



AES-256 data encryption and no internal storage (for LauncherOne) ensure data security and eliminate the risk of virus attack