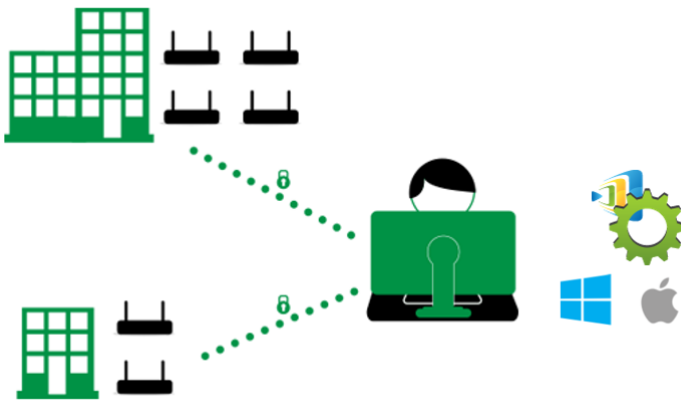


2.3 Using Remote Manager for Large Deployment

We provide **Novo Remote Manager**, a tool to remote control all NovoConnect, NovoDisplay and NovoTouch products. Responsible on Windows (Windows 7 and above) and Mac OS (10.7 and above). IT can use this tool to monitor, upgrade, modify configuration remotely.

How to get Novo Remote Manager: Please contact with our local distributors.



First of all, please make sure the Novo device is connected to the Internet as it is going to contact our upgrade server for upgrade information.

Update Remote Manager software

Launch Remote Manager software, make sure upgrade to the latest version.

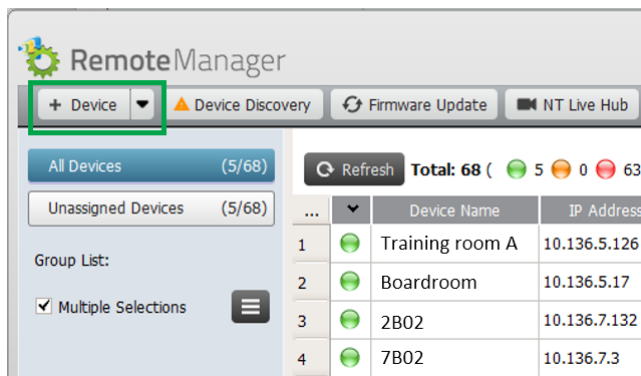
Make sure your laptop or Macbook have connect with Internet. If the software is old version it will show **New version** button on the top right corner. Click **New version** to update the latest version.



Update Remote Manager to the latest version

Add a new device on your list

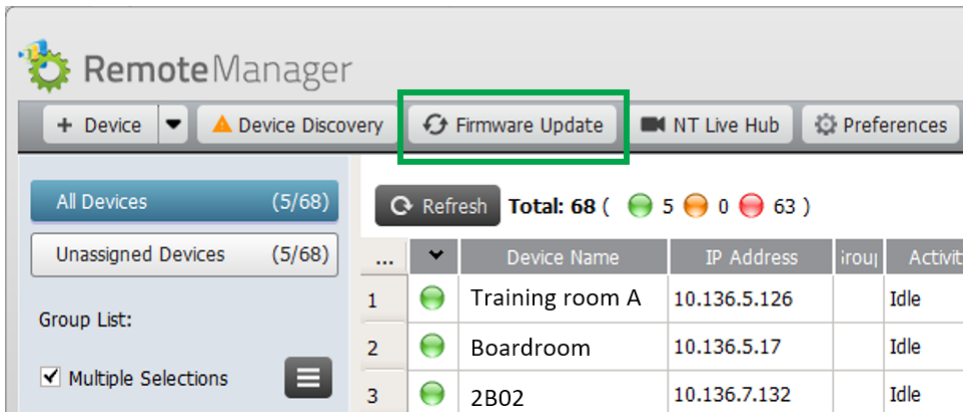
There is a device list on its main window. If the device is not within the list, it should be added into the list firstly. Click **+ Device** on the top left corner > Enter device **IP address** and **Description** to add a new device.



Add a new device

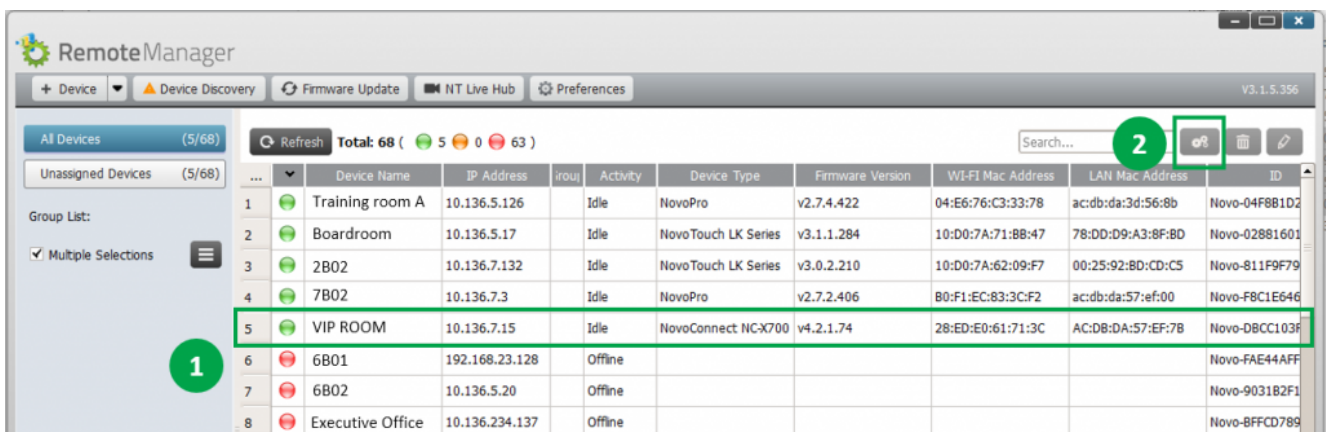
Upgrade all devices

Click **Firmware Update** to upgrade all online Novo device to the latest version. (Make sure all Novo device have to access to Internet.). Go to [this article](#) has the details.

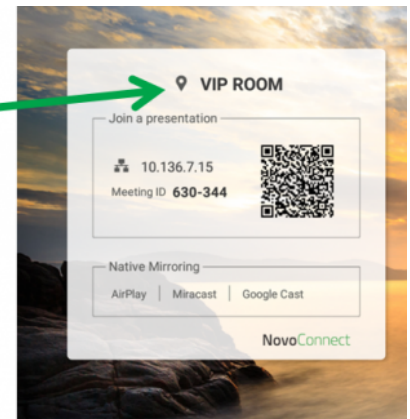
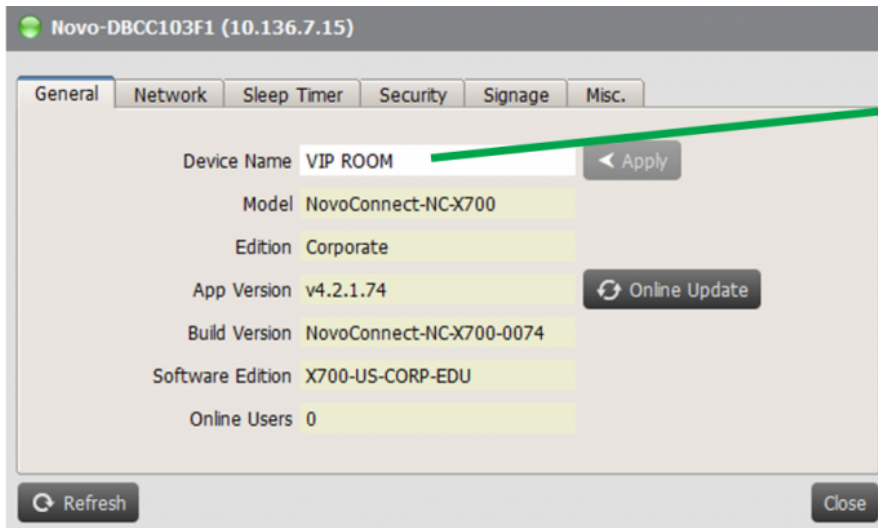


Modify device configuration

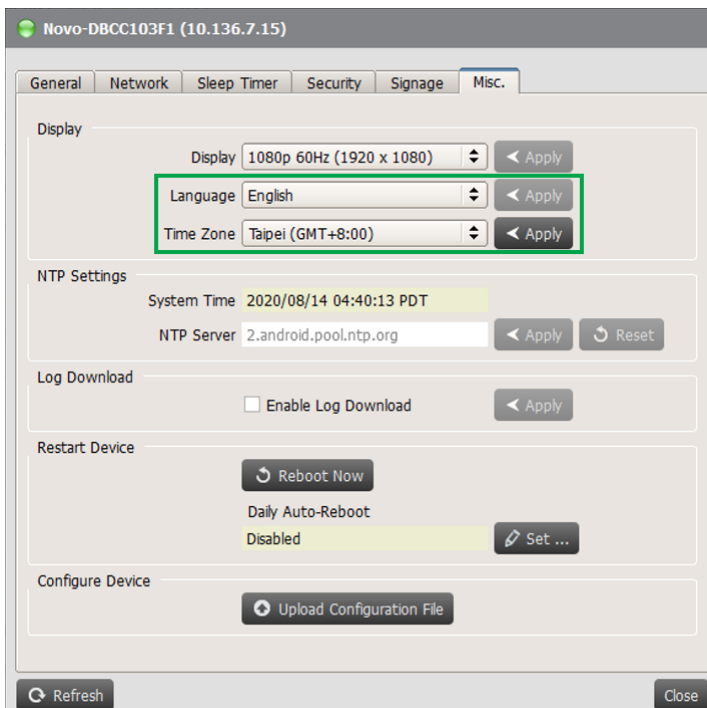
Choose the device you'd like to do modify the settings, and its status icon should be green which indicates it is online. Then click the **Setting** button on the top right corner.



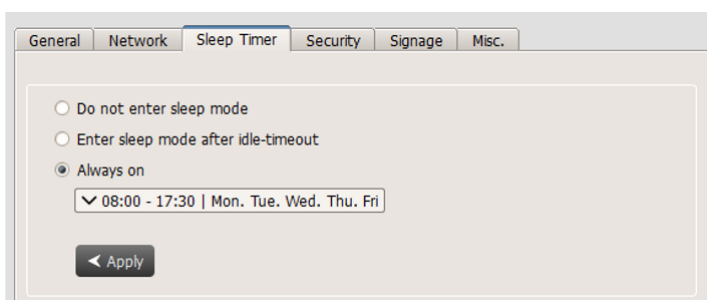
1) **Device Name:** Go to **Setting** > **General** > Enter **Device Name**. The device name will display on the home screen of device and show on NovoConnect App.



2) Time Zone and Language: Go to **Setting > Misc. > Display >** to setup local **Language** and **Time Zone**.



3) Sleep Timer: Go to **Setting > Sleep Timer** to schedule device HDMI output signal or display to turn ON/OFF.



4) Signage Settings: NovoConnect X700/ X900 and NovoDisplay support NovoDS digital signage feature, a easy-to-use network-based digital signage solution that is ideal for creating dynamic displays.

We provide **DS Studio** software for user to design, schedule and publish your playlist to your device. Go to <http://novods.com> > **RESOURCES** > **Software** to download **DS Studio** software. User can have an account with NovoDS.com to enjoy our cloud service for FREE trial for 3 months.



5) Security: IT can control to enable or disable AirPlay, AirPlay code, Google Cast, Miracast and software PIN code required. IT also can enable settings lock, a password protection.

